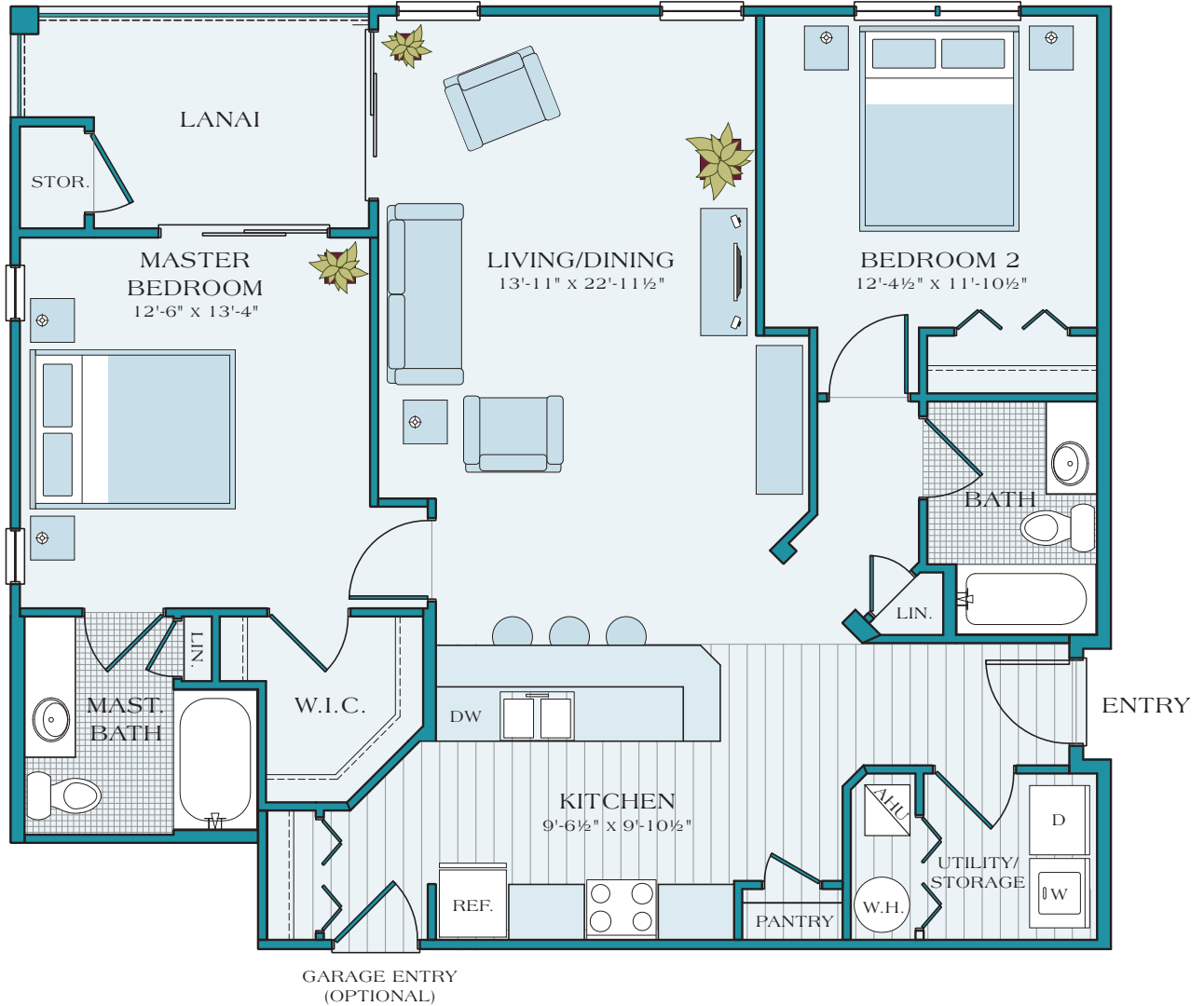


SENECA AT CYPRESS CREEK

THE TIDES

Two Bedroom / Two Bath, 1310 sq. ft. (Approx.)



HOME FEATURES

- Spacious, Open Floorplan
- 9' Ceilings
- Screened in Lanai
- Crown Molding*
- Wood Plank Floors*
- Bar Height Kitchen Counter
- Larger Walk-in Closet,
- Bathroom and Interior Storage**
- Washer/Dryer
- Black on Black Appliances
- Garden Tub
- Attached Direct Access Garage**
- Storage

* In some rooms

** In some apartments

Unit Price \$ _____/month

Application Fee \$ _____

Security Deposit \$ _____

A **GREYSTAR** COMMUNITY



1810 Sweetbroom Circle, Lutz, FL 33559 | T (813) 909 2000 | F (813) 909 2009 | SenecaAtCypressCreek.com